

## Preliminary Technical Information

# WorléeCure VP 2235

Art.-No.: 312501-20766

Version: 12/2017

WorléeCure VP 2235 is an epoxy curing agent based on a polyamine adduct.

### Technical Data:

Viscosity at 25°C	560 ± 50	mPas	Rheometer, C 60/2°, 30 s <sup>-1</sup>
Amine value	300 ± 50	mg KOH/g	According to DIN 16945
Hydrogen Equivalent weight (g/Val.)	115	g/Val.	Technically determined
Colour Index	< 2	Gardner	DIN ISO 4630
Density at 20°C	1,02 ± 0,02	g/cm <sup>3</sup>	DIN EN ISO 2811-2
Geltime*	approx. 36	min	DIN 16945
Pendulum hardness	180	s	200 µm after 7 days rt
Shore D hardness	81		ISO 868, after 7 days rt
<b>Delivery form</b>	100%		

\* with epoxy resin, EEW: 187

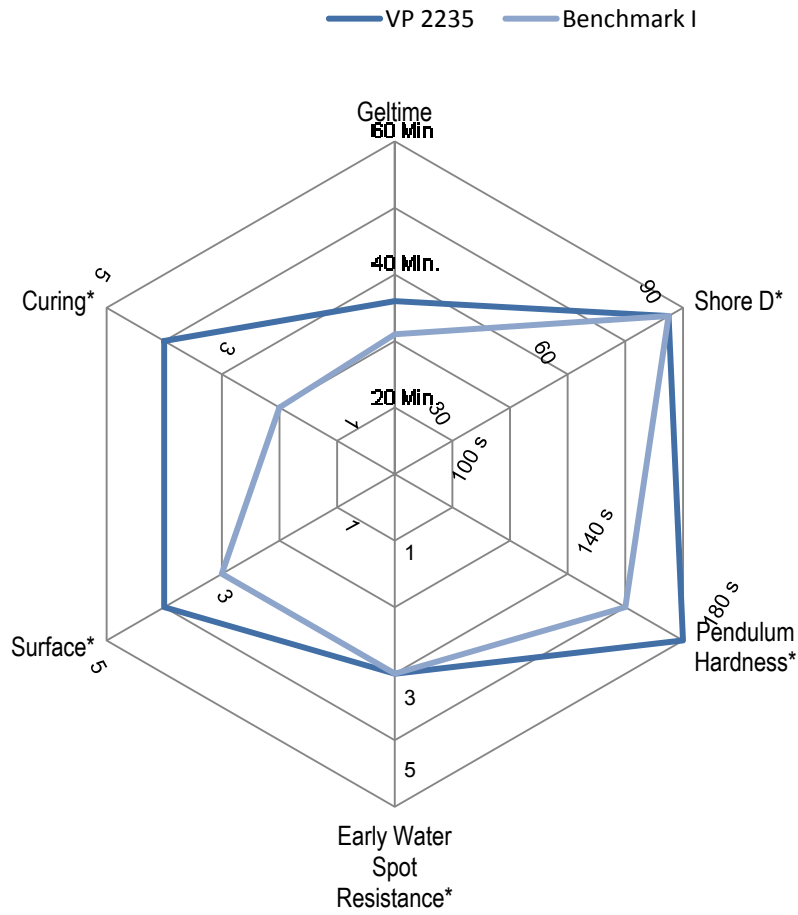
### Application and Properties:

WorléeCure VP 2235 used as universal curing agent for laminating- and coating resin systems as well as for highly filled coating materials, mortars and primers and epoxy flooring systems.

### Recommend Transport and Storage Conditions:

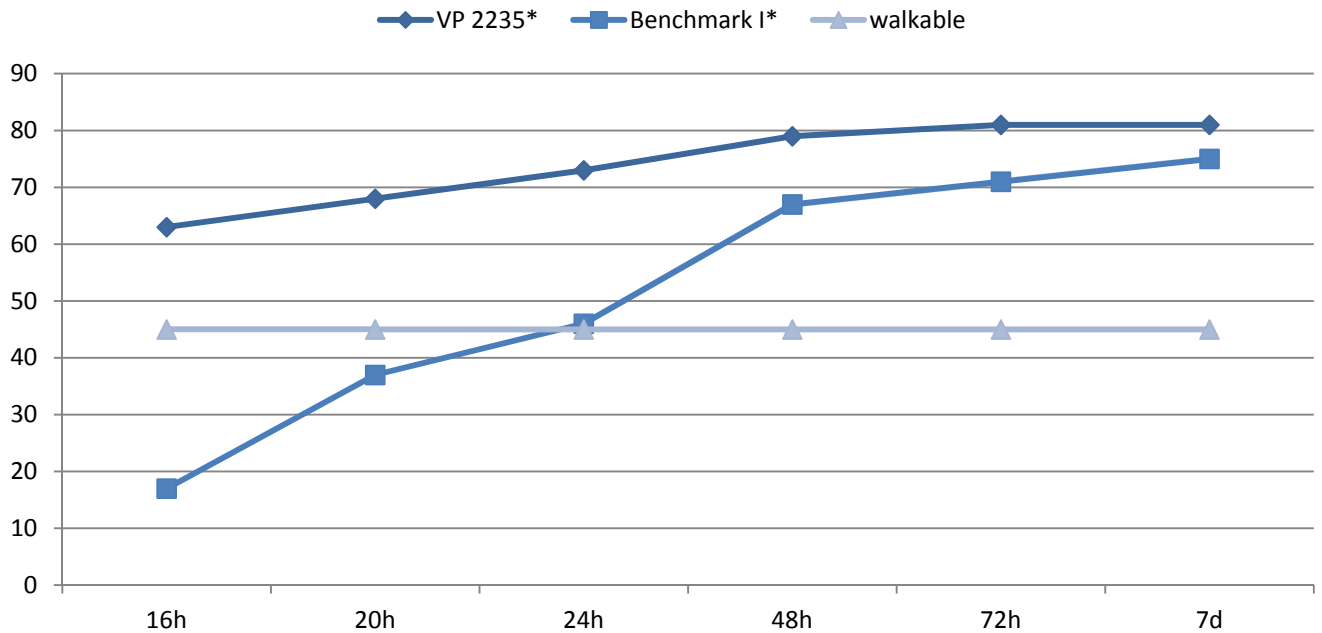
WorléeCure VP 2235 should be protected for freezing and direct sunlight. When appropriate stored in closed containers at temperatures between 10 °C and 30 °C, then shelf life is at least 12 months.

**Performance Profile**



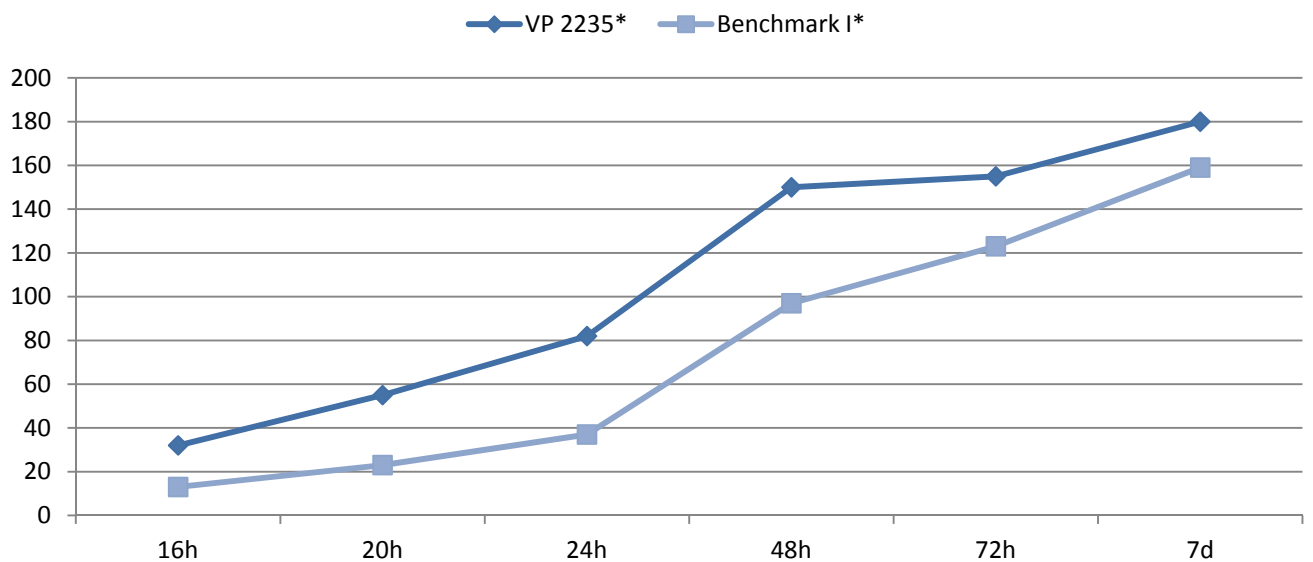
\* with A/F-resin (C12-C14 diluted)  
1 = poor  
5 = excellent

**Shore D at RT**



\* with A/F-resin (C12-C14 diluted)

**Pendulum Hardness at 20°C/50 % RH, 200 µm**



\* with A/F-resin (C12-C14 diluted)

The product described in this preliminary technical data sheet is a trial product which has not yet been industrially manufactured. Worlée-Chemie GmbH has not yet been able to monitor performance over a sufficiently period and therefore, cannot accept liability or provide a warranty for the product, in particular on its suitability for specific applications.