

Preliminary Technical Information

WorléeCure VP 2246

Art.-No.: 312501-20764

Version: 12/2017

WorléeCure VP 2246 is an epoxy curing agent based on a polyamine adduct.

Technical Data:

Viscosity at 25°C	170 ± 50	mPas	Rheometer, C 60/2°, 30 s ⁻¹
Amine value	325 ± 50	mg KOH/g	According to DIN 16945
Hydrogen Equivalent weight (g/Val.)	93	g/Val.	Technically determined
Colour Index	< 2	Gardner	DIN ISO 4630
Density at 20°C	1,02 ± 0,02	g/cm ³	DIN EN ISO 2811-2
Geltime*	approx. 39	min	DIN 16945
Pendulum hardness	171	s	200 µm after 7 days rt
Shore D hardness	82		ISO 868, after 7 days rt
Delivery form	100%		

* with epoxy resin, EEW: 187

Application and Properties:

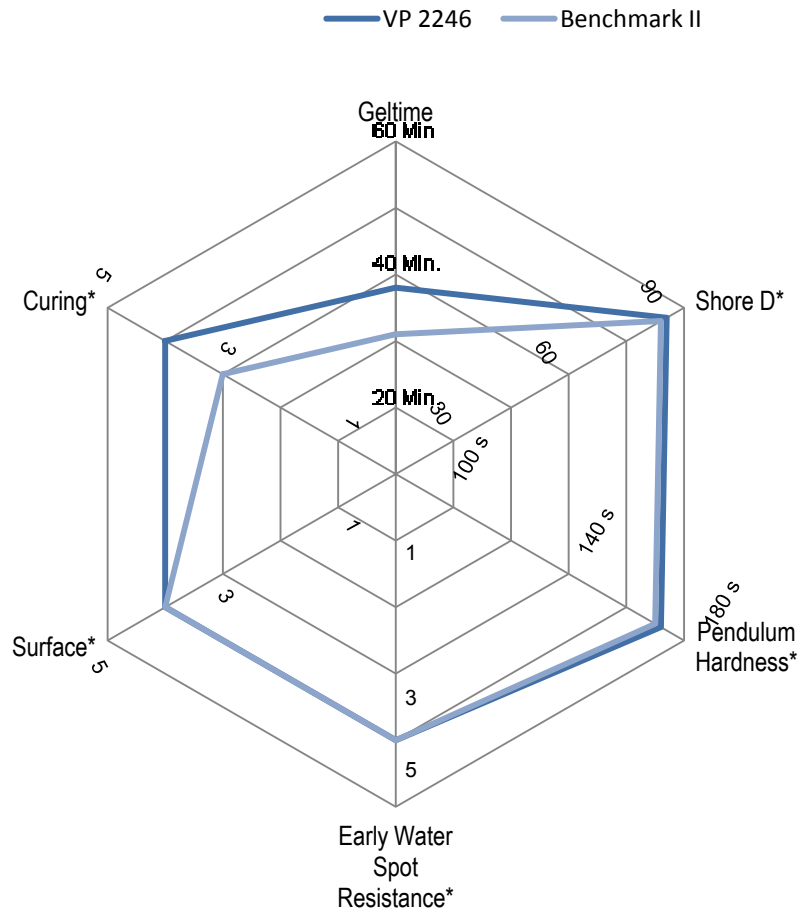
WorléeCure VP 2246 used as universal curing agent for laminating- and coating resin systems as well as for highly filled coating materials, mortars and primers and epoxy flooring systems.

Recommend Transport and Storage Conditions:

WorléeCure VP 2246 should be protected for freezing and direct sunlight. When appropriate stored in closed containers at temperatures between 10 °C and 30 °C, then shelf life is at least 12 months.



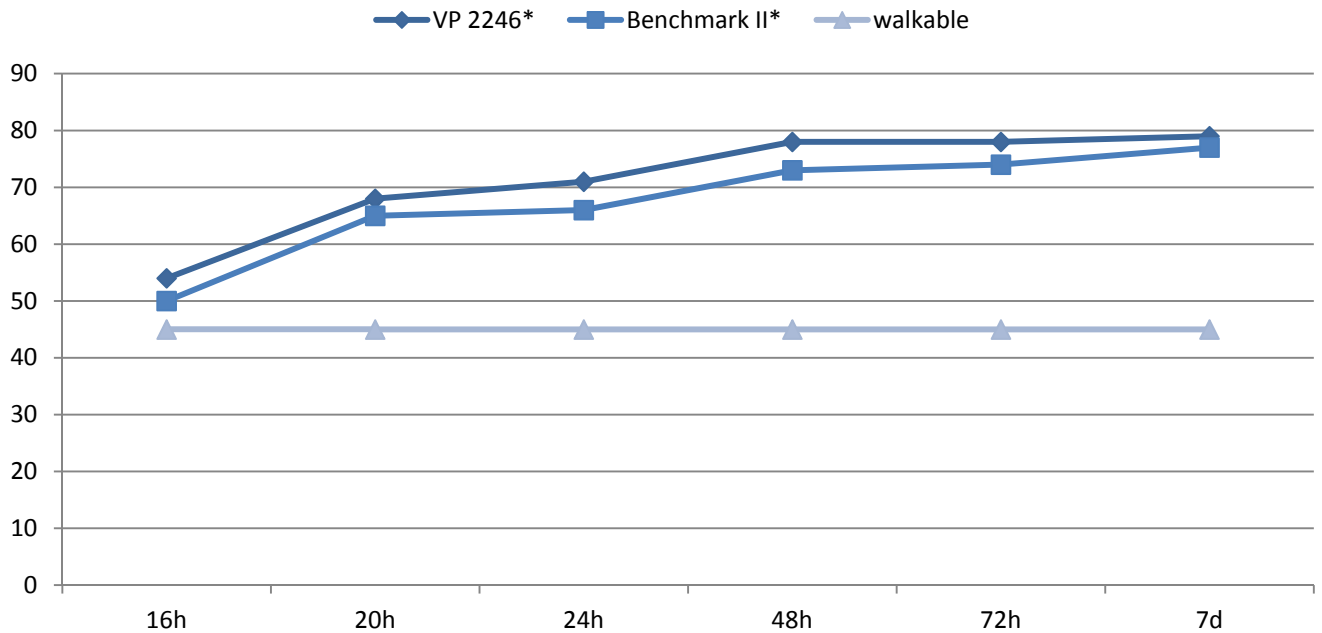
Performance Profile



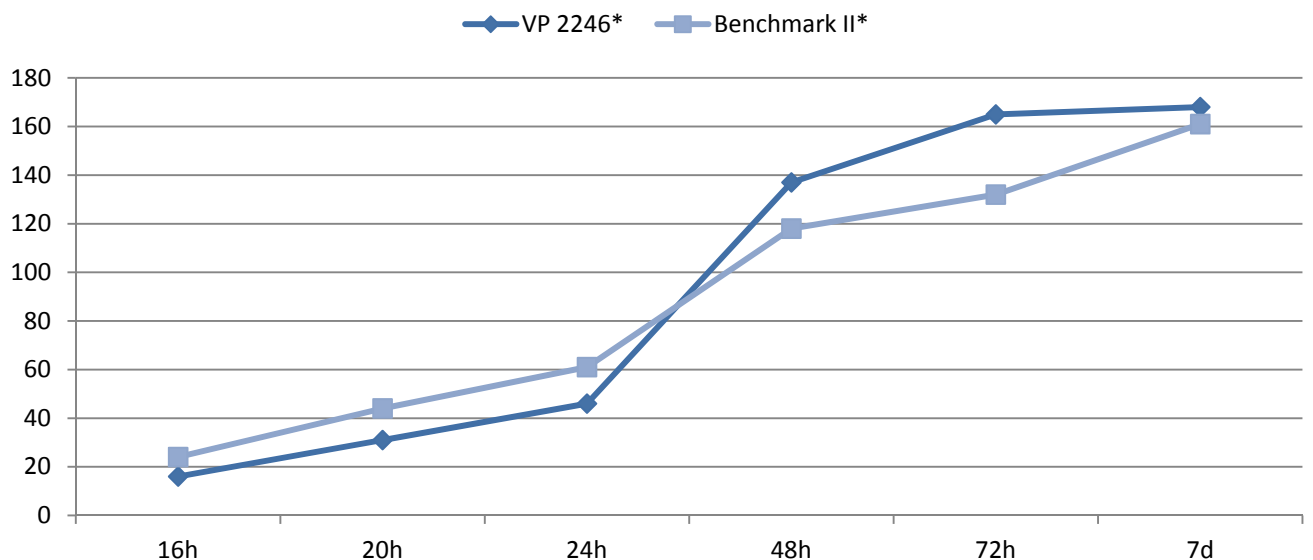
* with A/F-resin (C12-C14 diluted)

1 = poor

5 = excellent

**Shore D at RT**

* with A/F-resin (C12-C14 diluted)

Pendulum Hardness at 20°C/50 % RH, 200 µm

* with A/F-resin (C12-C14 diluted)

The product described in this preliminary technical data sheet is a trial product which has not yet been industrially manufactured. Worlée-Chemie GmbH has not yet been able to monitor performance over a sufficiently period and therefore, cannot accept liability or provide a warranty for the product, in particular on its suitability for specific applications.